

# L-Histidine Antibody – Rabbit

## Polyclonal

Ref: IS1066

Highly affine and specific, the IS1066 anti-L-Histidine antibody can be used with the [STAINperfect immunostaining kit A](#) to perform ICC/IHC/IF stainings in cell cultures, whole mounts and tissue sections.

<b>Clonality</b>	Polyclonal
<b>Host</b>	Rabbit
<b>Reactivity</b>	Reacts with all species
<b>Validated by</b>	ELISA
<b>Staining procedure</b>	<a href="#">STAINperfect immunostaining kit A</a>
<b>Format</b>	50µl

## INFORMATIONS

---

### Product overview

<b>Product name</b>	L-Histidine - Rabbit pAb
<b>Synonyms</b>	Anti-Histidine antibody Anti-His antibody Anti-2-Amino-3-(1 <i>H</i> -imidazol-4-yl)propanoic acid antibody
<b>Immunogen</b>	Conjugated L-Histidine
<b>Specificity</b>	When tested in competitive ELISA, the anti-conjugated L-Histidine antibody did not show any significant cross-reactivity with L-Histidine competitors: Histamine, L-Histidinol, and 3-Methyl-L-Histidine

### Storage

<b>Form</b>	Liquid
<b>Purity</b>	Purified anti-serum
<b>Storage</b>	Store at 4°C
<b>Storage buffer</b>	Store at +4°C for short term (1-2 months). Aliquot and store at -20°C for long term. Avoid repeated freeze / thaw cycles
<b>Material safety datasheet</b>	<a href="#">Download MSDS</a>

# PROTOCOLS

**IF - Cell cultures, Whole mounts, Tissue sections**

Dilute antibody with the antibody diluent provided in the [STAINperfect immunostaining kit A](#). Use at 1/250 -1/1000 dilution. Follow the STAINperfect protocol suited to your sample

**Comments**

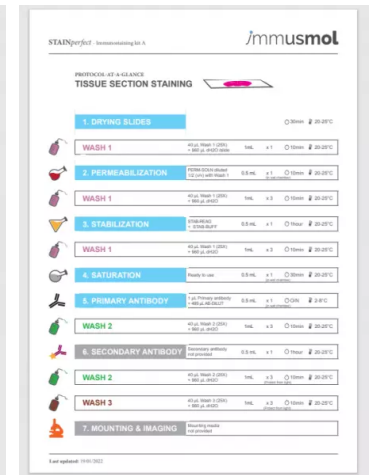
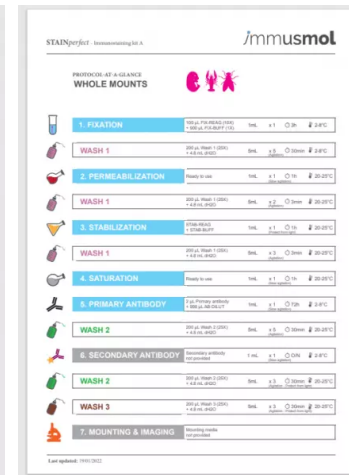
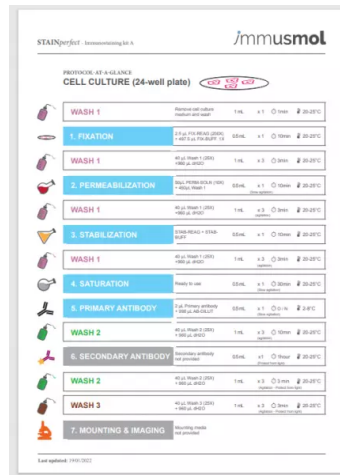
Optimal working dilutions must be determined by the end-user

**Restrictions**

For research use only

**Full protocol**

[Download STAINperfect protocol](#)



[Complete Instructions for Use](#)

[Protocol-at-a-glance for cell cultures](#)

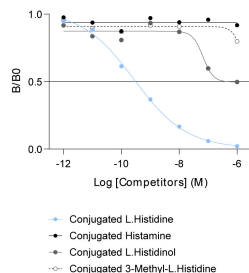
[Protocol-at-a-glance for whole mounts](#)

[Protocol-at-a-glance for tissue sections](#)

# REFERENCES

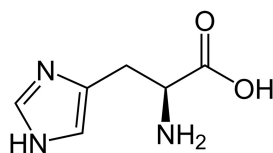
Antibody not yet cited.

# Product pictures



### Affinity & specificity of anti-L-Histidine antibody

Competitive ELISA demonstrates that low amounts of L-Histidine conjugate are required to abolish antigen-antibody reaction (high affinity), while rising concentrations of Histamine, L-Histidinol, and 3-Methyl-L.Histidine (L-Histidine competitors) do not affect reaction (high specificity).



L-Histidine

## Contact information

Immusmol  
229 Cours de l'Argonne  
33 000 Bordeaux - France  
Tel: +33 (0) 5 6431 1170  
www.immusmol.com

**To order, review, ask for technical support, visit product page at:**

<https://www.immusmol.com/shop/l-histidine-antibody-rabbit-polyclonal/>