

# Kynurenic Acid ELISA kit

## High Sensitivity – Serum

Ref: IS-I-0200R

Kynurenic acid (KYNA) is a downstream metabolite produced along the Kynurenine Pathway well-known to possess several neuromodulatory functions, as well as immuno-modulatory properties. Measurement of KYNA in biological samples has been presented as a possible biomarker in several diseases including neurological or psychiatric disorders.

The Kynurenic Acid ELISA kit is optimized for the quantitation of Kynurenic Acid (KYNA) within **serum** samples. This easy-to-use competitive assay is well-suited for both small and large series of samples. Working with a 50µL sample volume, this assay enables pre-clinical and clinical sample testings.

**Sample type** Serum

---

**Capacity** 96 tests

---

**Sensitivity** 2.8nM

---

**Range** 10 - 391nM

---

**Assay time** Sample derivatization 90 min, ELISA overnight

---

**Reactivity** Reacts with all species

---

**References** [Cited in 10 papers](#)

# INFORMATIONS

## Product overview

<b>Product name</b>	Kynurenic Acid ELISA kit
<b>Description</b>	Competitive ELISA kit for the quantitative measurement of Kynurenic Acid in serum samples. <b>For research use only</b>
<b>Format</b>	96-well plate
<b>Samples</b>	Serum
<b>Minimal sample volume</b>	50µL
<b>Reactivity</b>	Reacts with all species
<b>Standard range</b>	1.40 – 74ng/mL
<b>Sensitivity</b>	0.53ng/mL
<b>Specificity</b>	No significant cross-reactivity was observed with Kynurenic Acid analogs such as Quinolinic Acid, Xanthurenic acid, Kynurenine, Picolinic acid, 3-Hydroxy-Anthranilic Acid
<b>Assay time</b>	Sample derivatization 90 min and ELISA overnight
<b>Storage</b>	Store at 2-8°C for up to 6 months
<b>Datasheets</b>	<a href="#">Instructions for use</a> , <a href="#">Material Safety Datasheet</a>

## PROTOCOLS

---

**Sample collection & storage**      Serum: Do not use lipemic, haemolytic samples, as well as samples containing precipitates or fibrin strands  
Store samples at 2-8°C for up to 48h or -20°C for longer period (up to 6 months)

---

**Sample preparation**                      Sample derivatization (90 min)

---

**ELISA**    Kynurenic acid antiserum overnight incubation, revelation and read steps (1h)

---

**Detailed protocol**                      [Download instructions for use](#)

## REFERENCES

---

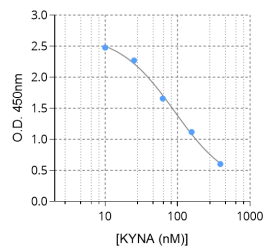
### Product citations

## Product pictures

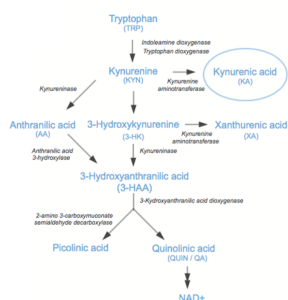
---



**Kynurenic acid ELISA kit**



**Typical standard curve of Kynurenic acid ELISA**



## Kynurenic acid (KYNA) is a metabolite produced along the Kynurenine Pathway

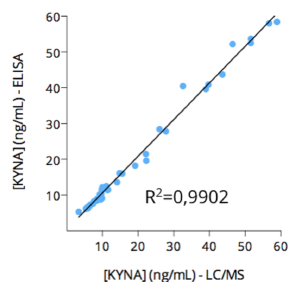
Kynurenic acid (KYNA) is a downstream metabolite produced along the Kynurenine Pathway well-known to possess several neuromodulatory functions, as well as immunomodulatory properties.



**Kynurenic acid ELISA kit**



**Kynurenic acid ELISA kit**



### Cross-validation of Kynurenic Acid ELISA and LC/MS data in human serum samples

Human serum samples (n=40) were processed for Kynurenic Acid measurement by mean of both KYNA ELISA kit and liquid chromatography-mass spectrometry (LC/MS). As depicted, results obtained with ELISA and LC/MS are highly correlated ( $R^2=0,9902$ ).

## Contact information

Immusmol  
229 Cours de l'Argonne  
33 000 Bordeaux - France  
Tel: +33 (0) 5 6431 1170  
[www.immusmol.com](http://www.immusmol.com)

**To order, review, ask for technical support, visit product page at:**

<https://www.immusmol.com/shop/kynurenic-acid-elisa-kit/>