

D-Glutamate Antibody – Rabbit Polyclonal

Ref: IS1002

This anti-D-Glutamate rabbit polyclonal antibody IS1002 was developed to ensure superior affinity and specificity. Combined with the [STAINperfect immunostaining kit A](#), this antibody allows direct D-Glutamic acid visualization in cell cultures, whole mounts and tissue sections.

Clonality	Polyclonal antibody
Host	Rabbit
Reactivity	Reacts with all species
Eligible samples	Whole mounts, cell culture, tissue sections
Staining procedure	STAINperfect immunostaining kit A
Format	50µL (approx. 40 tissue sections)

INFORMATIONS

Product overview

Product name	D-Glutamate antibody – Rabbit pAb
Synonyms	Anti-D-Glutamic acid antibody
Immunogen	Conjugated D-Glutamate
Specificity	When tested in competitive ELISA, the anti-conjugated D-Glutamate antibody did not show any significant cross reactivity with D-Glutamate analogs, L-Glutamate and D-Aspartate

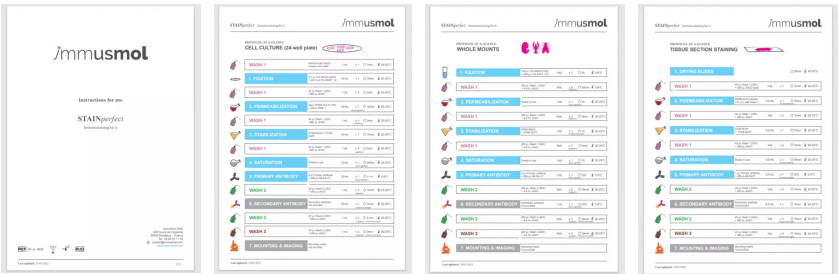
Reconstitution & storage

Form	Liquid
Purity	Purified anti-serum
Storage buffer	Store at +4°C for short term (1-2 months). Aliquot and store at -20°C for long term. Avoid repeated freeze / thaw cycles
Material safety datasheet	Download MSDS

PROTOCOLS

IF - Cell cultures, Whole mounts, Tissue sections	Dilute antibody with the antibody diluent provided in the STAINperfect immunostaining kit A . Use at 1/250 -1/1000 dilution. Follow the STAINperfect protocol suited to your sample
Comments	Optimal working dilutions must be determined by the end-user
Restrictions	For research use only
Full protocol	Download STAINperfect protocol for D-Glutamate staining

Protocols-at-a-glance

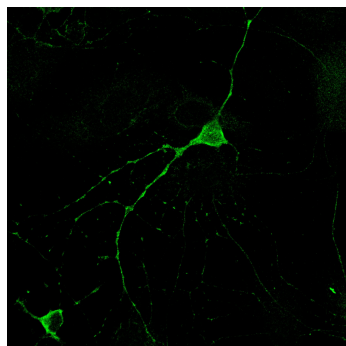


- [Complete Instructions for Use](#)
- [Protocol-at-a-glance for cell cultures](#)
- [Protocol-at-a-glance for whole mounts](#)
- [Protocol-at-a-glance for tissue sections](#)

REFERENCES

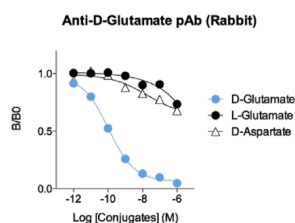
Antibody not yet cited. Submit an article and [get a 10% discount](#).

Product pictures



D-Glutamate detection in primary mouse cortical neurons

Primary mouse cortical neurons were stained using ImmuSmol anti-D-Glutamate antibody using the STAINperfect immunostaining kit A and following the optimized protocol for cell culture. Alexa fluor 488 conjugated secondary antibodies were used and image was captured by confocal imaging.



Affinity & specificity of anti-D-Glutamate antibody

Competitive ELISA demonstrates that low amount of D-Glutamate conjugate is required to abolish antigen-antibody reaction (high affinity), while rising concentrations of L-Glutamate and D-Aspartate conjugates do not affect reaction (high specificity).

Contact information

Immusmol
229 Cours de l'Argonne
33 000 Bordeaux - France
Tel: +33 (0) 5 6431 1170
www.immusmol.com

To order, review, ask for technical support, visit product page at:

<https://www.immusmol.com/shop/d-glutamate-pab/>