

# L-DOPA rabbit pAb – IS1030

Ref: IS1030-sp

The anti-L-DOPA antibody IS1030 is a rabbit polyclonal antibody developed to be highly affine and specific. Using optimal sample preparation with the [STAINperfect immunostaining kit A](#), our antibody stains L-DOPA directly in whole mounts, cell culture and tissue sections.

<b>Clonality</b>	Polyclonal antibody
<b>Host</b>	Rabbit
<b>Reactivity</b>	Reacts with all species
<b>Tested samples</b>	Whole mounts, cell culture, tissue sections
<b>Staining procedure</b>	<a href="#">STAINperfect immunostaining kit A</a>
<b>Format</b>	50µL (approx. 40 tissue sections)

# INFORMATIONS

## Product overview

<b>Product name</b>	L-DOPA antibody – Rabbit pAb
<b>Synonyms</b>	Anti-3,4-Dihydroxy-L-phenylalanine antibody
<b>Immunogen</b>	Conjugated L-DOPA
<b>Specificity</b>	When tested in competitive ELISA, the anti-conjugated L-DOPA antibody did not show any significant cross reactivity with L-Serine analogs, including Normetanephine and Dopamine conjugates

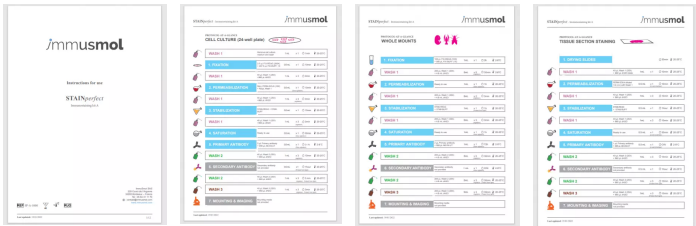
## Storage

<b>Form</b>	Liquid
<b>Purity</b>	Purified anti-serum
<b>Storage buffer</b>	Store at +4°C for short term (1-2 months). Aliquot and store at -20°C for long term. Avoid repeated freeze / thaw cycles
<b>Material safety datasheet</b>	<a href="#">Download MSDS</a>

# PROTOCOLS

IF - Cell cultures, Whole mounts, Tissue sections	Dilute antibody with the antibody diluent provided in the <a href="#">STAINperfect immunostaining kit A</a> . Use at 1/250 -1/1000 dilution. Follow the STAINperfect protocol suited to your sample
Comments	Optimal working dilutions must be determined by the end-user
Restrictions	For research use only
Full protocol	<a href="#">Download STAINperfect protocol for L-DOPA staining</a>

## Protocols-at-a-glance

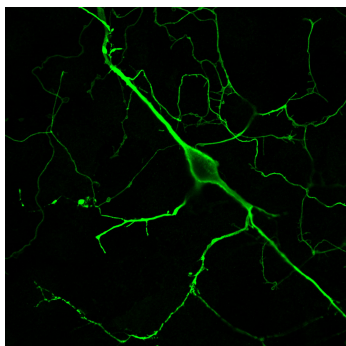


- [Complete Instructions for Use](#)
- [Protocol-at-a-glance for cell cultures](#)
- [Protocol-at-a-glance for whole mounts](#)
- [Protocol-at-a-glance for tissue sections](#)

# REFERENCES

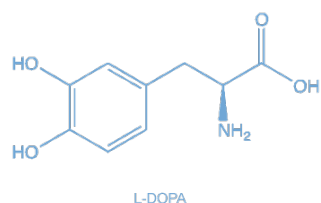
Antibody not yet cited. Submit an article and [get a 10% discount](#).

# Product pictures

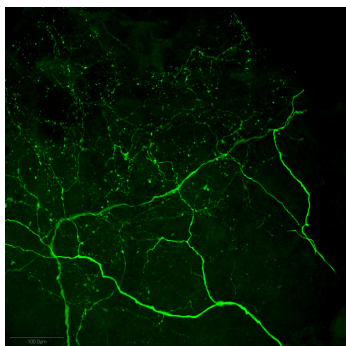


### Imaging of L-DOPA neurons in mouse primary neurons

Our rabbit polyclonal anti-L-DOPA antibody - IS1030 - allows the detection of L-DOPA neurons in primary mouse neurons. Staining was performed using STAINperfect immunostaining kit A, according to the protocol optimized for cell culture. Fluorescent labeled secondary antibody was used and picture was acquired by high-content imaging. Such staining highlights the presence of L-DOPA both in soma and neurons fibers.

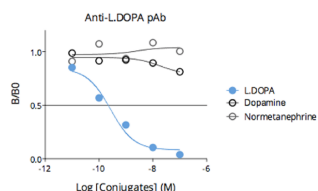


**L-DOPA**



### Immunofluorescence imaging of L-DOPA in crayfish

L-DOPA is detected within fibers with varicosities within the fourth thoracic ganglia of crayfish. Staining was performed using STAINperfect immunostaining kit A following the protocol dedicated to whole mount samples. Secondary antibody (goat anti-rabbit Alexa Fluor® 488) was used and picture was acquired by confocal imaging at high magnification.



### Affinity & specificity of anti- L-DOPA antibody

Competitive ELISA demonstrates that low amounts of L-DOPA conjugate are required to abolish antigen-antibody reaction (high affinity), while rising concentrations of L-DOPA competitors Dopamine or Normetanephrine do not affect reaction (high specificity).

## Contact information

Immusmol  
229 Cours de l'Argonne

33 000 Bordeaux - France

Tel: +33 (0) 5 6431 1170

[www.immusmol.com](http://www.immusmol.com)

**To order, review, ask for technical support, visit product page at:**

<https://www.immusmol.com/shop/l-dopa-polyclonal-antibody-bundle/>