

Glycine Antibody – Rabbit Polyclonal

Ref: IS1034

This rabbit polyclonal anti-Glycine antibody was validated for IF in mouse primary cortical neurons in combination with the [STAINperfect immunostaining kit A](#). Following sample preparation according to the kit, this antibody allows direct Glycine visualization in cell cultures, whole mounts and tissue sections.

Clonality	Polyclonal antibody
Host	Rabbit
Reactivity	Reacts with all species
Tested samples	Whole mounts, cell culture, tissue sections
Staining procedure	STAINperfect immunostaining kit A
Format	50µL (approx. 40 tissue sections)
References	Cited in 1 paper

INFORMATIONS

Product overview

Product name	Glycine antibody – Rabbit polyclonal Ab
Synonyms	Anti-aminoacetic acid antibody
Immunogen	Conjugated Glycine
Specificity	When tested in competitive ELISA, the anti-conjugated Glycine antibody did not show any significant cross reactivity with Glycine analogs, including Alanine and Serine conjugates
Volume	50µL

Storage

Form	Liquid
Purity	Purified anti-serum
Storage	Store at +4°C for short term (1-2 months). Aliquot and store at -20°C for long term. Avoid repeated freeze / thaw cycles
Material safety datasheet	Download MSDS

PROTOCOLS


IF - Cell cultures, Whole mounts, Tissue sections Dilute antibody with the antibody diluent provided in the [STAINperfect immunostaining kit A](#). Use at 1/250 -1/1000 dilution. Follow the STAINperfect protocol suited to your sample

Comments Optimal working dilutions must be determined by the end-user

Restrictions For research use only

Full protocol [Download STAINperfect protocol for Glycine staining](#)

Protocols-at-a-glance



immusmol

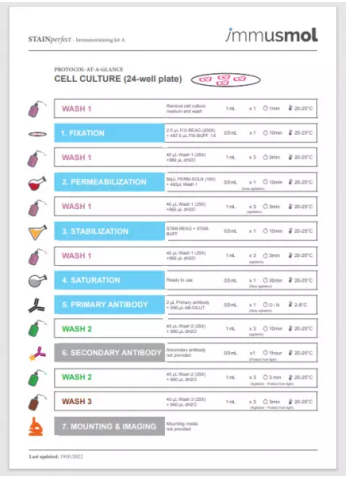
Instructions for use

STAINperfect
Immunostaining kit A

Immunofluorescence (IF) and Confocal Laser Scanning Microscopy (CLSM) are powerful tools for studying cellular processes. This manual provides detailed instructions for the use of the STAINperfect Immunostaining kit A, ensuring optimal results in your experiments.

For more information, please visit our website: www.immusmol.com

© 2010 immusmol GmbH. All rights reserved.

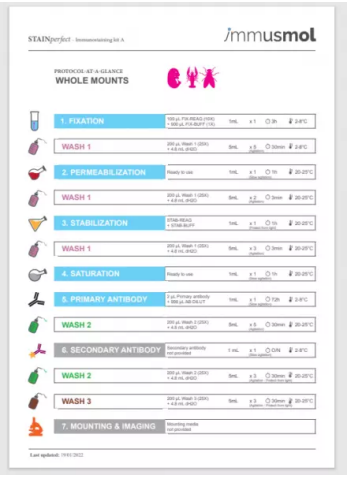


STAINperfect Immunostaining kit A

immusmol

PROTOCOL AT-A-GLANCE
CELL CULTURE (24-well plate)

1. FIXATION
2. PERMEABILIZATION
3. STABILIZATION
4. SATURATION
5. PRIMARY ANTIBODY
6. SECONDARY ANTIBODY
7. MOUNTING & IMAGING

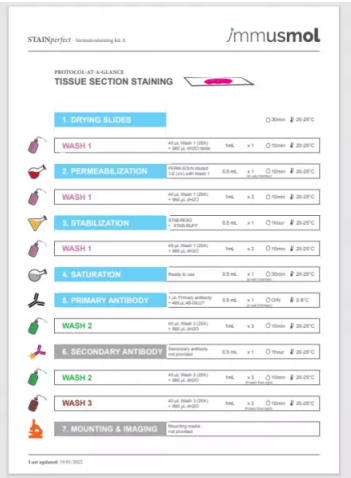


STAINperfect Immunostaining kit A

immusmol

PROTOCOL AT-A-GLANCE
WHOLE MOUNTS

1. FIXATION
2. PERMEABILIZATION
3. STABILIZATION
4. SATURATION
5. PRIMARY ANTIBODY
6. SECONDARY ANTIBODY
7. MOUNTING & IMAGING



STAINperfect Immunostaining kit A

immusmol

PROTOCOL AT-A-GLANCE
TISSUE SECTION STAINING

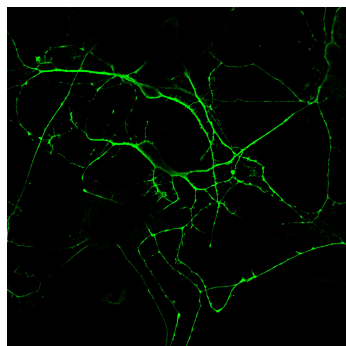
1. DRYING SLIDES
2. PERMEABILIZATION
3. STABILIZATION
4. SATURATION
5. PRIMARY ANTIBODY
6. SECONDARY ANTIBODY
7. MOUNTING & IMAGING

- [Complete Instructions for Use](#)
- [Protocol-at-a-glance for cell cultures](#)
- [Protocol-at-a-glance for whole mounts](#)
- [Protocol-at-a-glance for tissue sections](#)

REFERENCES

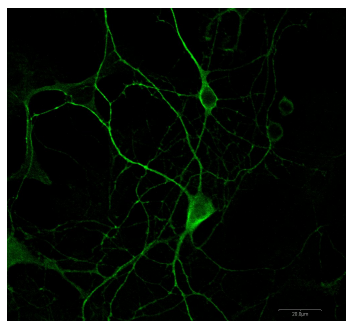
Product citation

Product pictures



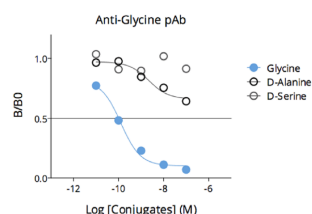
Glycine detection in primary mouse cortical neurons - fibers and soma

Primary mouse cortical neurons were stained with IS1034 anti-Glycine antibody using the STAINperfect immunostaining kit A and according to the optimized protocol for cell culture. After incubation with secondary antibody, this staining reveals the presence of Glycine within fibers and soma of some neurons. Image was obtained by confocal imaging.



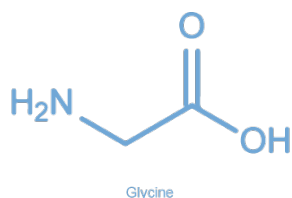
Affinity & specificity of anti-Glycine antibody

Competitive ELISA demonstrates that low amounts of Glycine conjugate are required to abolish antigen-antibody reaction (high affinity), while rising concentrations of Glycine competitors D-Alanine or D-Serine do not affect reaction (high specificity).



Affinity & specificity of anti-Glycine antibody

Competitive ELISA demonstrates that low amounts of Glycine conjugate are required to abolish antigen-antibody reaction (high affinity), while rising concentrations of Glycine competitors D-Alanine or D-Serine do not affect reaction (high specificity).



Glycine detection in primary mouse cortical neurons

Primary mouse cortical neurons were stained using IS1034 anti-Glycine antibody using the STAINperfect immunostaining kit A and according to the optimized protocol for cell culture. Alexa fluor 488 conjugated secondary antibody was used and picture obtained by confocal imaging.

Contact information

Immusmol
229 Cours de l'Argonne
33 000 Bordeaux - France

Tel: +33 (0) 5 6431 1170

www.immusmol.com

To order, review, ask for technical support, visit product page at:

<https://www.immusmol.com/shop/glycine-rabbit-pab/>