

Serotonin Antibody – Goat Polyclonal

Ref: IS1035

The anti-Serotonin antibody IS1035 is a goat polyclonal antibody with high affinity and specificity. Using with the [STAINperfect immunostaining kit A](#), our antibody stains directly 5-HT in whole mounts, cell culture and tissue sections.

Clonality	Polyclonal antibody
Host	Goat
Reactivity	Reacts with all species
Tested samples	Whole mounts, cell culture, tissue sections
Staining procedure	STAINperfect immunostaining kit A
Format	50µL (approx. 40 tissue sections)

INFORMATIONS

Product overview

Product name	Serotonin antibody (5-HT goat polyclonal Ab)
Synonyms	Anti-5-HT antibody Anti-5-hydroxytryptamine antibody Anti-hydroxytryptamine antibody
Immunogen	Conjugated 5-HT
Specificity	When tested in competitive ELISA, the anti-conjugated Serotonin antibody did not show any significant cross reactivity with 5-Hydroxytryptamine analogs, including Tryptamine and 5-HydroxyTryptophan
Volume	50µL

Storage

Form	Liquid
Purity	Purified anti-serum
Storage buffer	Store at +4°C for short term (1-2 months). Aliquot and store at -20°C for long term. Avoid repeated freeze / thaw cycles
Material safety datasheet	Download MSDS

PROTOCOLS


IF - Cell cultures, Whole mounts, Tissue sections Dilute antibody with the antibody diluent provided in the [STAINperfect immunostaining kit A](#). Use at 1/250 - 1/1000 dilution. Follow the STAINperfect protocol suited to your sample

Comments Optimal working dilutions must be determined by the end-user

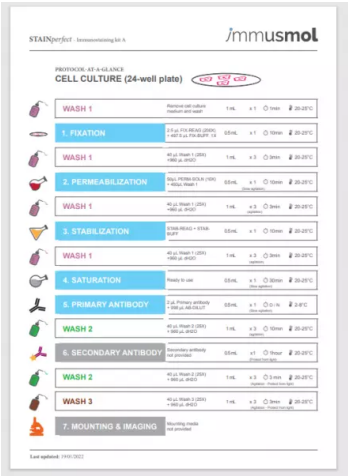
Restrictions For research use only

Full protocol [Download STAINperfect protocol for Serotonin staining](#)

Protocols-at-a-glance

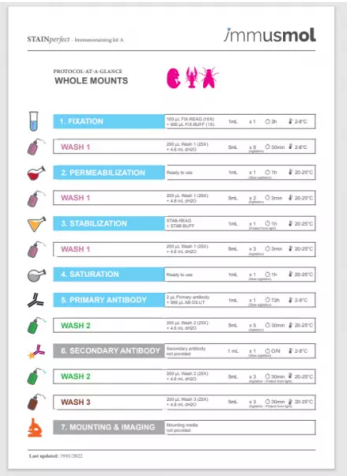


Instructions for use
STAINperfect
Immunostaining kit A



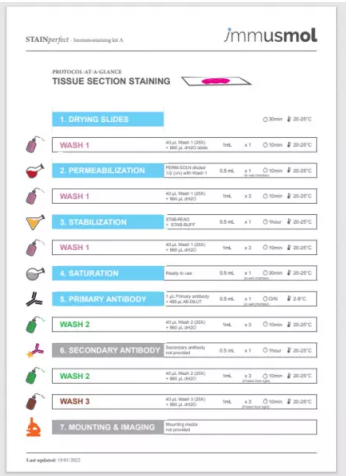
STAINperfect Immunostaining kit A
immusmol
PROTOCOL AT-A-GLANCE
CELL CULTURE (24-well plate)

WASH 1	Fixative (cell culture medium + 4% paraformaldehyde)	1 mL	x 1	15 min	20-25°C
1. FIXATION	1.5 L of PBS (pH 7.4) + 150 µL of 10% paraformaldehyde	50 mL	x 1	15 min	20-25°C
WASH 1	4°C PBS (pH 7.4)	1 mL	x 3	5 min	20-25°C
2. PERMEABILIZATION	1 mL PBS (pH 7.4) + 0.1% Triton X-100	50 mL	x 1	15 min	20-25°C
WASH 1	4°C PBS (pH 7.4)	1 mL	x 3	5 min	20-25°C
3. STABILIZATION	100 µL of 1% BSA + 100 µL of 1% Triton X-100	50 mL	x 1	15 min	20-25°C
WASH 1	4°C PBS (pH 7.4)	1 mL	x 3	5 min	20-25°C
4. SATURATION	Ready to use	50 mL	x 1	15 min	20-25°C
5. PRIMARY ANTIBODY	1 µL of Primary antibody (1:1000 dilution)	50 mL	x 1	1 h	20-25°C
WASH 2	4°C PBS (pH 7.4)	1 mL	x 3	5 min	20-25°C
6. SECONDARY ANTIBODY	100 µL of Secondary antibody (1:1000 dilution)	50 mL	x 1	1 h	20-25°C
WASH 2	4°C PBS (pH 7.4)	1 mL	x 3	5 min	20-25°C
WASH 3	4°C PBS (pH 7.4)	1 mL	x 3	5 min	20-25°C
7. MOUNTING & IMAGING	Mounting media not provided				



STAINperfect Immunostaining kit A
immusmol
PROTOCOL AT-A-GLANCE
WHOLE MOUNTS

1. FIXATION	100 µL of PBS (pH 7.4) + 100 µL of 10% paraformaldehyde	1 mL	x 1	15 min	20-25°C
WASH 1	4°C PBS (pH 7.4)	1 mL	x 3	5 min	20-25°C
2. PERMEABILIZATION	Ready to use	1 mL	x 1	15 min	20-25°C
WASH 1	4°C PBS (pH 7.4)	1 mL	x 3	5 min	20-25°C
3. STABILIZATION	100 µL of 1% BSA + 100 µL of 1% Triton X-100	1 mL	x 1	15 min	20-25°C
WASH 1	4°C PBS (pH 7.4)	1 mL	x 3	5 min	20-25°C
4. SATURATION	Ready to use	1 mL	x 1	15 min	20-25°C
5. PRIMARY ANTIBODY	1 µL of Primary antibody (1:1000 dilution)	1 mL	x 1	1 h	20-25°C
WASH 2	4°C PBS (pH 7.4)	1 mL	x 3	5 min	20-25°C
6. SECONDARY ANTIBODY	100 µL of Secondary antibody (1:1000 dilution)	1 mL	x 1	1 h	20-25°C
WASH 2	4°C PBS (pH 7.4)	1 mL	x 3	5 min	20-25°C
WASH 3	4°C PBS (pH 7.4)	1 mL	x 3	5 min	20-25°C
7. MOUNTING & IMAGING	Mounting media not provided				



STAINperfect Immunostaining kit A
immusmol
PROTOCOL AT-A-GLANCE
TISSUE SECTION STAINING

1. DRYING SLIDES				30 min	20-25°C
WASH 1	4°C PBS (pH 7.4)	1 mL	x 1	15 min	20-25°C
2. PERMEABILIZATION	100 µL of 1% BSA + 100 µL of 1% Triton X-100	50 mL	x 1	15 min	20-25°C
WASH 1	4°C PBS (pH 7.4)	1 mL	x 3	5 min	20-25°C
3. STABILIZATION	100 µL of 1% BSA + 100 µL of 1% Triton X-100	50 mL	x 1	15 min	20-25°C
WASH 1	4°C PBS (pH 7.4)	1 mL	x 3	5 min	20-25°C
4. SATURATION	Ready to use	50 mL	x 1	15 min	20-25°C
5. PRIMARY ANTIBODY	1 µL of Primary antibody (1:1000 dilution)	50 mL	x 1	1 h	20-25°C
WASH 2	4°C PBS (pH 7.4)	1 mL	x 3	5 min	20-25°C
6. SECONDARY ANTIBODY	100 µL of Secondary antibody (1:1000 dilution)	50 mL	x 1	1 h	20-25°C
WASH 2	4°C PBS (pH 7.4)	1 mL	x 3	5 min	20-25°C
WASH 3	4°C PBS (pH 7.4)	1 mL	x 3	5 min	20-25°C
7. MOUNTING & IMAGING	Mounting media not provided				

[Complete Instructions for Use](#)

[Protocol-at-a-glance for cell cultures](#)

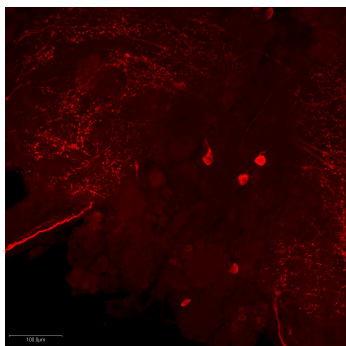
[Protocol-at-a-glance for whole mounts](#)

[Protocol-at-a-glance for tissue sections](#)

REFERENCES

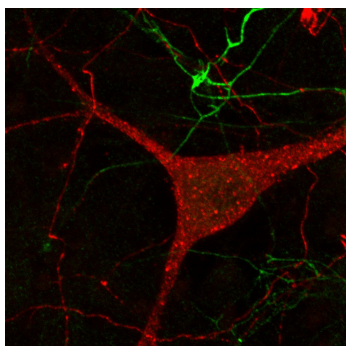
Antibody not yet cited.

Product pictures



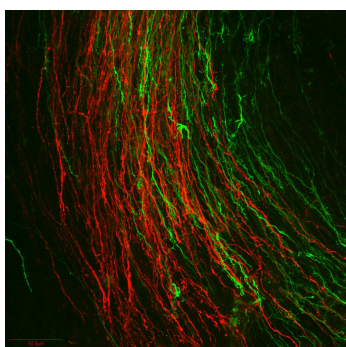
Serotonergic neurons in crayfish brain

Low magnification of serotonergic neurons in the brain of a crayfish. This staining shows serotonin presence in soma and fibers. Tissue was processed following whole mount protocol of STAINperfect immunostaining kit A. Fluorescent labeled secondary antibody was used and image was obtained by fluorescence imaging.



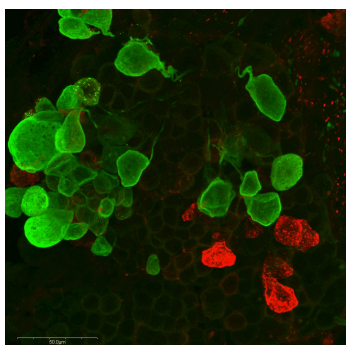
Dopamine (green) and Serotonin (red) immunostaining in mouse culture of primary midbrain neurons

Dopamine and Serotonin were stained in mouse culture of primary midbrain neurons. Stainings were obtained following the STAINperfect immunostaining kit A protocol optimized for cell culture using IS1005 rabbit polyclonal antibody against Dopamine and IS0135 goat polyclonal antibody against Serotonin. Fluorescent conjugated secondary antibodies were then used and images acquired using confocal imaging.



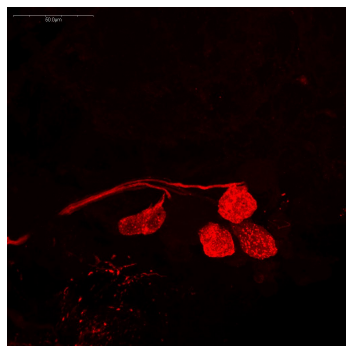
Dopamine (green) and Serotonin (red) immunostaining in the CNS of embryonic mouse E13.5

Dopamine (green) and Serotonin (red) were stained in the CNS of embryonic mouse E13.5 following the protocol optimized for whole mount of the STAINperfect immunostaining kit A. IS1005 rabbit polyclonal antibody against Dopamine and IS0135 goat polyclonal antibody against Serotonin were used. Fluorescent conjugated secondary antibodies were then used and images captured by confocal imaging.



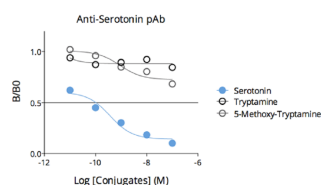
Immunolabeling of Octopaminergic and Serotonergic neurons

Immunostaining of crayfish eyetalk using anti-octopamine rabbit polyclonal antibody (green) and anti-serotonin goat polyclonal antibody (red). Tissues were processed with whole mount protocol of STAINperfect immunostaining kit A. Fluorescent labeled secondary antibodies were used and pictures were acquired by confocal imaging with high magnification.



Serotonin in crayfish eyetalk

High magnification of serotonergic neurons in a crayfish's eyetalk. This staining shows serotonin presence in soma containing vesicles and projections. Tissue was processed according to whole mount protocol of STAINperfect immunostaining kit A. Fluorescent labeled secondary antibody was used and picture was captured by confocal imaging.



Affinity & specificity of anti-Serotonin antibody

Competitive ELISA demonstrates that low amounts of Serotonin conjugate are required to abolish antigen-antibody reaction (high affinity), while rising concentrations of Serotonin competitors Tryptamine or 5-MethoxyTryptamine do not affect reaction (high specificity).

Contact information

Immusmol
229 Cours de l'Argonne
33 000 Bordeaux - France
Tel: +33 (0) 5 6431 1170
www.immusmol.com

To order, review, ask for technical support, visit product page at:

<https://www.immusmol.com/shop/serotonin-goat-pab/>