

L-Noradrenaline Antibody (Norepinephrine) – Rabbit Polyclonal

Ref: IS1042

The anti-Noradrenaline (NA) antibody IS1042 was validated for immunofluorescence in mouse brain and spinal cord tissues, in combination with the [STAINperfect immunostaining kit A](#). This anti-Norepinephrine antibody was recently used to evidence noradrenergic neurons in spider brain ([Jin et al, Nature Ecology & Evolution, 2023](#)).

Clonality	Polyclonal antibody
Host	Rabbit
Reactivity	Reacts with all species
Tested samples	Whole mounts, cell culture, tissue sections
Staining procedure	STAINperfect immunostaining kit A
Format	50µl (approx. 40 tissue sections)
References	Cited in 3 papers

INFORMATIONS

Product overview

Product name	L-Noradrenaline antibody – Rabbit pAb
Synonyms	Anti-Noradrenaline antibody Anti-Norepinephrine antibody Anti-NA antibody
Immunogen	Conjugated Noradrenaline
Specificity	When tested in competitive ELISA, the anti-conjugated NA antibody did not show any significant cross reactivity with for example Dopamine and normetanephrine conjugates
Volume	50µL

Storage

Form	Liquid
Purity	Purified anti-serum
Storage buffer	Store at +4°C for short term (1-2 months). Aliquot and store at -20°C for long term. Avoid repeated freeze / thaw cycles
Material safety datasheet	Download MSDS

PROTOCOLS


IF - Cell cultures, Whole mounts, Tissue sections Dilute antibody with the antibody diluent provided in the [STAINperfect immunostaining kit A](#). Use at 1/250 -1/1000 dilution. Follow the STAINperfect protocol suited to your sample

Comments Optimal working dilutions must be determined by the end-user

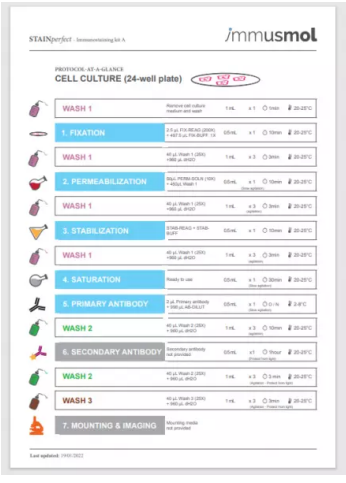
Restrictions For research use only

Full protocol [Download STAINperfect protocol for Noradrenaline staining](#)

Protocols-at-a-glance

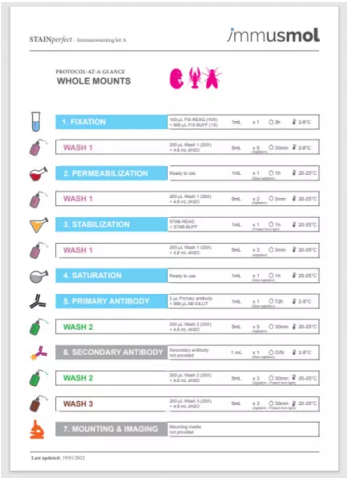


Instructions for use
STAINperfect
Immunostaining kit A



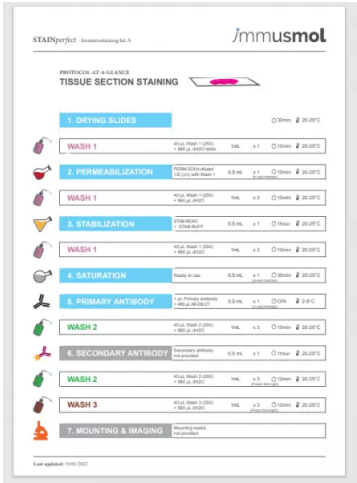
STAINperfect immunostaining kit A
immusmol
PROTOCOL AT-A-GLANCE
CELL CULTURE (24-well plate)

WASH 1	Remove cell culture medium and wash	1x1h	x:1	20-25°C
1. FIXATION	1.1. 25 µl FIX REAGENT (200x) + 2.5 µl PBS (1x) (25x)	15min	x:1	20-25°C
WASH 1	4x 10 min (200x + 2.5 µl PBS (1x))	1h	x:2	20-25°C
2. PERMEABILIZATION	2.1. 100 µl PERMEABILIZATION (100x) + 100 µl PBS (1x)	15min	x:1	20-25°C
WASH 1	4x 10 min (200x + 2.5 µl PBS (1x))	1h	x:2	20-25°C
3. STABILIZATION	3.1. 100 µl STABILIZATION (100x) + 100 µl PBS (1x)	15min	x:1	20-25°C
WASH 1	4x 10 min (200x + 2.5 µl PBS (1x))	1h	x:2	20-25°C
4. SATURATION	Ready to use	15min	x:1	20-25°C
5. PRIMARY ANTIBODY	5.1. 100 µl PRIMARY ANTIBODY (100x) + 100 µl PBS (1x)	1h	x:1	20-25°C
WASH 2	4x 10 min (200x + 2.5 µl PBS (1x))	1h	x:2	20-25°C
6. SECONDARY ANTIBODY	6.1. 100 µl SECONDARY ANTIBODY (100x) + 100 µl PBS (1x)	1h	x:1	20-25°C
WASH 2	4x 10 min (200x + 2.5 µl PBS (1x))	1h	x:2	20-25°C
WASH 3	4x 10 min (200x + 2.5 µl PBS (1x))	1h	x:2	20-25°C
7. MOUNTING & IMAGING	Mounting media not provided			



STAINperfect immunostaining kit A
immusmol
PROTOCOL AT-A-GLANCE
WHOLE MOUNTS

1. FIXATION	1.1. 25 µl FIX REAGENT (200x) + 2.5 µl PBS (1x) (25x)	15min	x:1	20-25°C
WASH 1	4x 10 min (200x + 2.5 µl PBS (1x))	1h	x:2	20-25°C
2. PERMEABILIZATION	Ready to use	15min	x:1	20-25°C
WASH 1	4x 10 min (200x + 2.5 µl PBS (1x))	1h	x:2	20-25°C
3. STABILIZATION	3.1. 100 µl STABILIZATION (100x) + 100 µl PBS (1x)	15min	x:1	20-25°C
WASH 1	4x 10 min (200x + 2.5 µl PBS (1x))	1h	x:2	20-25°C
4. SATURATION	Ready to use	15min	x:1	20-25°C
5. PRIMARY ANTIBODY	5.1. 100 µl PRIMARY ANTIBODY (100x) + 100 µl PBS (1x)	1h	x:1	20-25°C
WASH 2	4x 10 min (200x + 2.5 µl PBS (1x))	1h	x:2	20-25°C
6. SECONDARY ANTIBODY	6.1. 100 µl SECONDARY ANTIBODY (100x) + 100 µl PBS (1x)	1h	x:1	20-25°C
WASH 2	4x 10 min (200x + 2.5 µl PBS (1x))	1h	x:2	20-25°C
WASH 3	4x 10 min (200x + 2.5 µl PBS (1x))	1h	x:2	20-25°C
7. MOUNTING & IMAGING	Mounting media not provided			



STAINperfect immunostaining kit A
immusmol
PROTOCOL AT-A-GLANCE
TISSUE SECTION STAINING

1. DRYING SLIDES		30min		20-25°C
WASH 1	4x 10 min (200x + 2.5 µl PBS (1x))	1h	x:1	20-25°C
2. PERMEABILIZATION	2.1. 100 µl PERMEABILIZATION (100x) + 100 µl PBS (1x)	15min	x:1	20-25°C
WASH 1	4x 10 min (200x + 2.5 µl PBS (1x))	1h	x:2	20-25°C
3. STABILIZATION	3.1. 100 µl STABILIZATION (100x) + 100 µl PBS (1x)	15min	x:1	20-25°C
WASH 1	4x 10 min (200x + 2.5 µl PBS (1x))	1h	x:2	20-25°C
4. SATURATION	Ready to use	15min	x:1	20-25°C
5. PRIMARY ANTIBODY	5.1. 100 µl PRIMARY ANTIBODY (100x) + 100 µl PBS (1x)	1h	x:1	20-25°C
WASH 2	4x 10 min (200x + 2.5 µl PBS (1x))	1h	x:2	20-25°C
6. SECONDARY ANTIBODY	6.1. 100 µl SECONDARY ANTIBODY (100x) + 100 µl PBS (1x)	1h	x:1	20-25°C
WASH 2	4x 10 min (200x + 2.5 µl PBS (1x))	1h	x:2	20-25°C
WASH 3	4x 10 min (200x + 2.5 µl PBS (1x))	1h	x:2	20-25°C
7. MOUNTING & IMAGING	Mounting media not provided			

[Complete Instructions for Use](#)

[Protocol-at-a-glance for cell cultures](#)

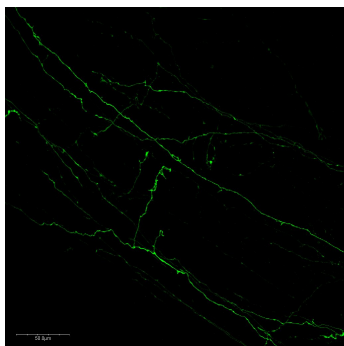
[Protocol-at-a-glance for whole mounts](#)

[Protocol-at-a-glance for tissue sections](#)

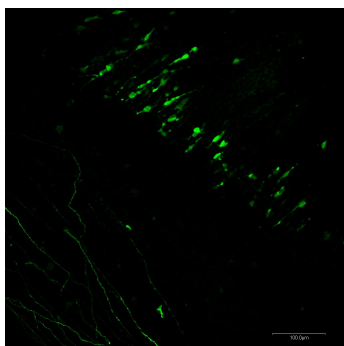
REFERENCES

Product citations

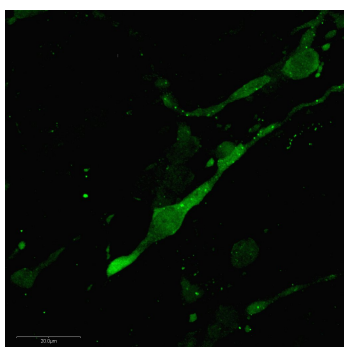
Product pictures

**Noradrenaline fibers in the pons of mouse embryo.**

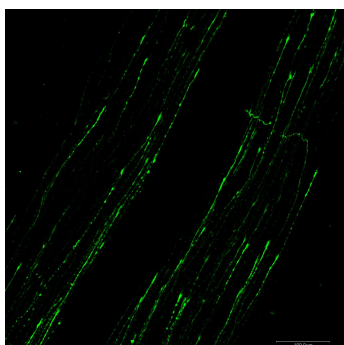
Noradrenergic fibers were specifically detected in the medulla of mouse embryo using STAINperfect immunostaining kit A and rabbit polyclonal anti-nordrenaline antibody and following the protocol for whole mount samples. Fluorescent secondary antibodies were used and pictures were acquired by confocal imaging.

**Noradrenergic neurones in the pons of embryonic mouse.**

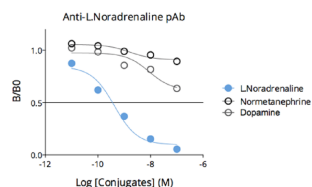
Using STAINperfect immunostaining kit A, the anti-Noradrenaline rabbit polyclonal antibody (Ref: IS1042) demonstrates the presence of noradrenaline in embryonic mouse pons (E13.5). The staining was performed according to the protocol optimized for whole-mount samples and was revealed using fluorescent conjugated secondary antibody.

**Noradrenergic neurones in CNS of mouse embryo.**

High magnification of noradrenergic neurones in the pons of embryonic mouse (E13.5) stained using STAINperfect immunostaining kit and anti-noradrenaline rabbit polyclonal antibody, with optimized protocol for whole mount samples. Fluorescent secondary antibodies were used and pictures were acquired by confocal imaging.

**Norepinephrine fibers in the spinal cord of embryonic mouse.**

Immunostaining of noradrenergic fibers in the spinal cord lumbar level of mouse embryo using rabbit polyclonal anti-nordrenaline antibody. Staining was performed with STAINperfect immunostaining kit A, following the protocol for whole mount samples. Fluorescent secondary antibodies were used and pictures were acquired by confocal imaging .



Affinity & specificity of anti- L-Noradrenaline antibody

Competitive ELISA demonstrates that low amounts of L-DOPA conjugate are required to abolish antigen-antibody reaction (high affinity), while rising concentrations of L-DOPA competitors Dopamine or Normetanephrine do not affect reaction (high specificity).

Contact information

Immusmol
229 Cours de l'Argonne
33 000 Bordeaux - France
Tel: +33 (0) 5 6431 1170
www.immusmol.com

To order, review, ask for technical support, visit product page at:

<https://www.immusmol.com/shop/l-noradrenaline-rabbit-ab/>