

L-DOPA Antibody – Rabbit Polyclonal

Ref: IS1030

The anti-L-DOPA antibody IS1030 is a rabbit polyclonal antibody validated for IF in crayfish tissues and mouse primary neurons. Following optimal sample preparation with the [STAINperfect immunostaining kit A](#), our antibody directly stains L-DOPA in whole mounts, cell culture, and tissue sections.

Clonality	Polyclonal antibody
Host	Rabbit
Reactivity	Reacts with all species
Tested samples	Whole mounts, cell culture, tissue sections
Staining procedure	STAINperfect immunostaining kit A
Format	50μL (approx. 40 tissue sections)

INFORMATIONS

Product overview

Product name	L-DOPA antibody – Rabbit pAb
Synonyms	Anti-3,4-Dihydroxy-L-phenylalanine antibody
Immunogen	Conjugated L-DOPA
Specificity	When tested in competitive ELISA, the anti-conjugated L-DOPA antibody did not show any significant cross reactivity with L-Serine analogs, including Normetanephine and Dopamine conjugates

Storage

Form	Liquid
Purity	Purified anti-serum
Storage buffer	Store at +4°C for short term (1-2 months). Aliquot and store at -20°C for long term. Avoid repeated freeze / thaw cycles
Material safety datasheet	Download MSDS

PROTOCOLS


IF - Cell cultures, Whole mounts, Tissue sections Dilute antibody with the antibody diluent provided in the [STAINperfect immunostaining kit A](#). Use at 1/250 -1/1000 dilution. Follow the STAINperfect protocol suited to your sample

Comments Optimal working dilutions must be determined by the end-user

Restrictions For research use only

Full protocol [Download STAINperfect protocol for L-DOPA staining](#)

Protocols-at-a-glance



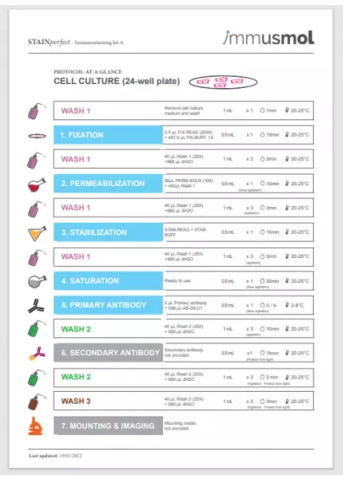
immusmol

Instructions for use

STAINperfect
Immunostaining kit A

immusmol SAS
220 Chemin de l'Éclaircie
93890 Gournay - France
Tel: 08 84 31 11 76
© immusmol.com
www.immusmol.com

Last updated: 19/01/2022



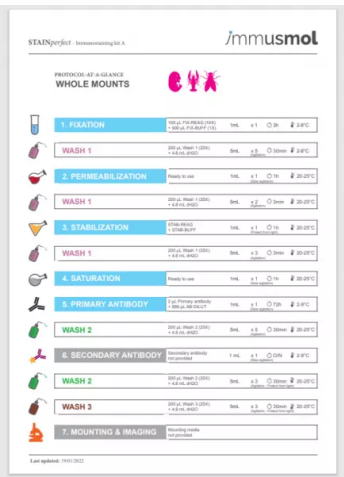
STAINperfect Immunostaining kit A

immusmol

PROTOCOL AT-A-GLANCE
CELL CULTURE (24-well plate)

1. FIXATION
2. PERMEABILIZATION
3. STABILIZATION
4. SATURATION
5. PRIMARY ANTIBODY
6. SECONDARY ANTIBODY
7. MOUNTING & IMAGING

Last updated: 19/01/2022



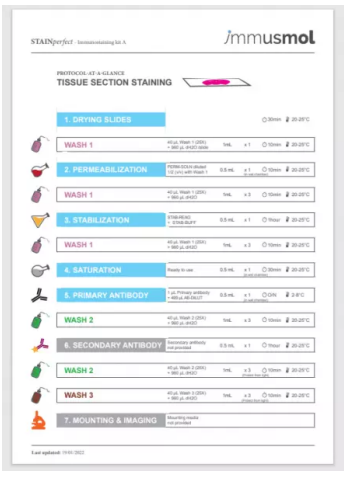
STAINperfect Immunostaining kit A

immusmol

PROTOCOL AT-A-GLANCE
WHOLE MOUNTS

1. FIXATION
2. PERMEABILIZATION
3. STABILIZATION
4. SATURATION
5. PRIMARY ANTIBODY
6. SECONDARY ANTIBODY
7. MOUNTING & IMAGING

Last updated: 19/01/2022



STAINperfect Immunostaining kit A

immusmol

PROTOCOL AT-A-GLANCE
TISSUE SECTION STAINING

1. DRYING SLIDES
2. PERMEABILIZATION
3. STABILIZATION
4. SATURATION
5. PRIMARY ANTIBODY
6. SECONDARY ANTIBODY
7. MOUNTING & IMAGING

Last updated: 19/01/2022

[Complete Instructions for Use](#)

[Protocol-at-a-glance for cell cultures](#)

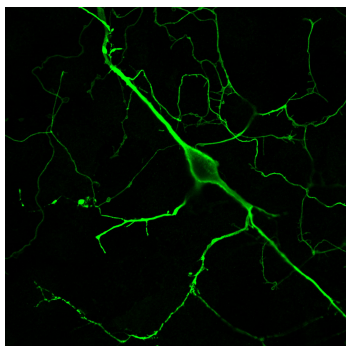
[Protocol-at-a-glance for whole mounts](#)

[Protocol-at-a-glance for tissue sections](#)

REFERENCES

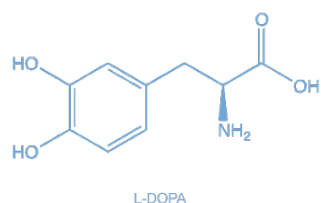
Antibody not yet cited.

Product pictures

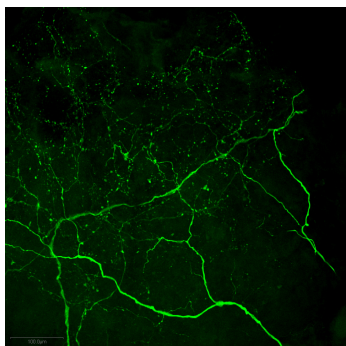


Imaging of L-DOPA neurons in mouse primary neurons

Our rabbit polyclonal anti-L-DOPA antibody - IS1030 - allows the detection of L-DOPA neurons in primary mouse neurons. Staining was performed using STAINperfect immunostaining kit A, according to the protocol optimized for cell culture. Fluorescent labeled secondary antibody was used and picture was acquired by high-content imaging. Such staining highlights the presence of L-DOPA both in soma and neurons fibers.

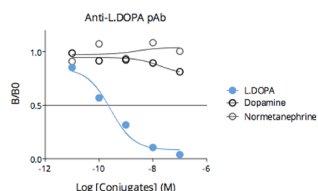


L-DOPA



Immunofluorescence imaging of L-DOPA in crayfish

L-DOPA is detected within fibers with varicosities within the fourth thoracic ganglia of crayfish. Staining was performed using STAINperfect immunostaining kit A following the protocol dedicated to whole mount samples. Secondary antibody (goat anti-rabbit Alexa Fluor® 488) was used and picture was acquired by confocal imaging at high magnification.



Affinity & specificity of anti- L-DOPA antibody

Competitive ELISA demonstrates that low amounts of L-DOPA conjugate are required to abolish antigen-antibody reaction (high affinity), while rising concentrations of L-DOPA competitors Dopamine or Normetanephrine do not affect reaction (high specificity).

Contact information

Immusmol
229 Cours de l'Argonne

33 000 Bordeaux - France

Tel: +33 (0) 5 6431 1170

www.immusmol.com

To order, review, ask for technical support, visit product page at:

<https://www.immusmol.com/shop/l-dopa-rabbit-pab/>