

# L-Tyrosine Antibody – Rabbit Polyclonal

Ref: IS1037

The anti-L-Tyrosine antibody IS1037 is a rabbit polyclonal antibody developed to be highly affine and specific. Combined with optimal sample preparation using [STAINperfect immunostaining kit A](#), this antibody allows direct L-Tyrosine visualization in whole mounts, tissue sections.

<b>Clonality</b>	Polyclonal antibody
<b>Host</b>	Rabbit
<b>Reactivity</b>	Reacts with all species
<b>Tested samples</b>	Whole mount, tissue sections & ELISA
<b>Staining procedure</b>	<a href="#">STAINperfect immunostaining kit A</a>
<b>Format</b>	50µL (approx. 40 tissue sections)

# INFORMATIONS

## Product overview

<b>Product name</b>	L-Tyrosine antibody
<b>Synonyms</b>	Anti-L-Tyrosine polyclonal antibody (S)-2-Amino-3-(4-hydroxyphenyl)propionic acid, 3-(4-Hydroxyphenyl)-L-alanine polyclonal antibody
<b>Immunogen</b>	Conjugated L-Tyrosine
<b>Specificity</b>	When tested in competitive ELISA, the anti-conjugated L-Tyrosine antibody do not show significant cross-reactivity with several competitors including L-Phenyl-Alanine and L-DOPA conjugates

## Storage

<b>Form</b>	Liquid
<b>Purity</b>	Purified anti-serum
<b>Storage buffer</b>	Store at +4°C for short term (1-2 months). Aliquot and store at -20°C for long term. Avoid repeated freeze / thaw cycles
<b>Material safety datasheet</b>	<a href="#">Download MSDS</a>

PROTOCOLS


**IF - Cell cultures, Whole mounts, Tissue sections** Dilute antibody with the antibody diluent provided in the [STAINperfect immunostaining kit A](#). Use at 1/250 -1/1000 dilution. Follow the STAINperfect protocol suited to your sample

**Comments** Optimal working dilutions must be determined by the end-user

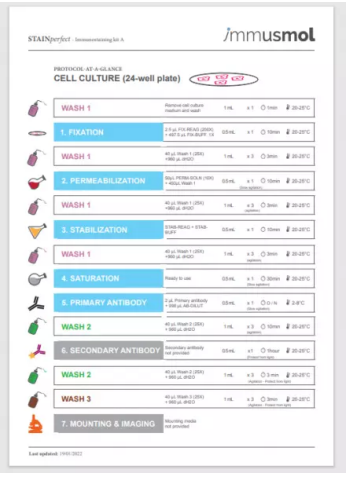
**Restrictions** For research use only

**Full protocol** [Download STAINperfect protocol for L-Tyrosine staining](#)

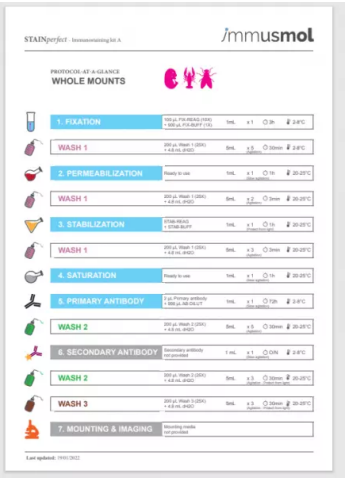
Protocols-at-a-glance



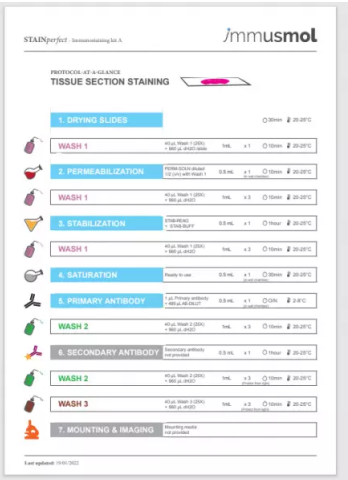
Instructions for use  
STAINperfect  
Immunostaining kit A



STAINperfect immunostaining kit A  
immusmol  
PROTOCOL AT-A-GLANCE  
CELL CULTURE (24-well plate)  
WASH 1  
1. FIXATION  
WASH 1  
2. PERMEABILIZATION  
WASH 1  
3. STABILIZATION  
WASH 1  
4. SATURATION  
5. PRIMARY ANTIBODY  
WASH 2  
6. SECONDARY ANTIBODY  
WASH 2  
7. MOUNTING & IMAGING



STAINperfect immunostaining kit A  
immusmol  
PROTOCOL AT-A-GLANCE  
WHOLE MOUNTS  
1. FIXATION  
WASH 1  
2. PERMEABILIZATION  
WASH 1  
3. STABILIZATION  
WASH 1  
4. SATURATION  
5. PRIMARY ANTIBODY  
WASH 2  
6. SECONDARY ANTIBODY  
WASH 2  
7. MOUNTING & IMAGING



STAINperfect immunostaining kit A  
immusmol  
PROTOCOL AT-A-GLANCE  
TISSUE SECTION STAINING  
1. DRYING SLIDES  
WASH 1  
2. PERMEABILIZATION  
WASH 1  
3. STABILIZATION  
WASH 1  
4. SATURATION  
5. PRIMARY ANTIBODY  
WASH 2  
6. SECONDARY ANTIBODY  
WASH 2  
7. MOUNTING & IMAGING

[Complete Instructions for Use](#)

[Protocol-at-a-glance for cell cultures](#)

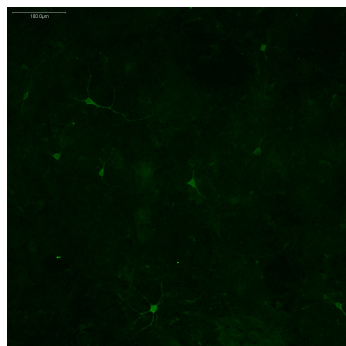
[Protocol-at-a-glance for whole mounts](#)

[Protocol-at-a-glance for tissue sections](#)

REFERENCES

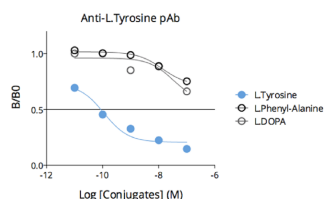
Antibody not yet cited.

Product pictures



### L-Tyrosine imaging in mouse embryonic midbrain neurons (E13.5)

Using STAINperfect immunostaining kit A, L-Tyrosine (green) was detected within mouse embryonic midbrain neurons (E13.5) following the protocol optimized for whole mount samples. Stainings were performed using Immusmol rabbit anti-L-Tyrosine polyclonal Ab (IS1037). Fluorescent conjugated antibodies were used and images acquired by confocal imaging.



### Affinity & specificity of anti- L-Tyrosine antibody

Competitive ELISA demonstrates that low amounts of L-Tyrosine conjugate are required to abolish antigen-antibody reaction (high affinity), while rising concentrations of L-Tyrosine competitors L-DOPA or L-Phenyl-Alanine do not affect reaction (high specificity).

## Contact information

Immusmol  
229 Cours de l'Argonne  
33 000 Bordeaux - France  
Tel: +33 (0) 5 6431 1170  
[www.immusmol.com](http://www.immusmol.com)

**To order, review, ask for technical support, visit product page at:**

<https://www.immusmol.com/shop/l-tyrosine-rabbit-pab/>