

# L-Homoarginine Antibody – Rabbit Polyclonal

Ref: IS1025

This rabbit polyclonal antibody recognizes L-Homoarginine at a 1/10 000 working dilution, while displaying no significant cross-reactivity with competitors such as Asymmetric Dimethyl Arginine (ADMA), Symmetric Dimethyl Arginine (SDMA) and L-Arginine. Our team is currently working on the IF/ICC/IHC protocol for optimal staining in combination with the [STAINperfect immunostaining kit A](#).

<b>Clonality</b>	Polyclonal
<b>Host</b>	Rabbit
<b>Reactivity</b>	Reacts with all species
<b>Validated by</b>	ELISA
<b>Staining procedure</b>	<a href="#">STAINperfect immunostaining kit A</a>
<b>Format</b>	50µl

## INFORMATIONS

---

### Product overview

<b>Product name</b>	L-Homoarginine - Rabbit pAb
<b>Synonyms</b>	Anti-L-Homoarginine antibody Anti-(S)-2-Amino-6-guanidinohexanoic acid hydrochloride antibody
<b>Immunogen</b>	Conjugated L-Homoarginine
<b>Specificity</b>	When tested in competitive ELISA, the anti-conjugated L-Homoarginine antibody did not show any significant cross reactivity with L-Homoarginine competitors, Asymmetric Dimethyl Arginine (ADMA), Symetric Dimethyl Arginine (SDMA) and L-Arginine
<b>Storage</b>	
<b>Form</b>	Liquid
<b>Purity</b>	Purified anti-serum
<b>Storage</b>	Store at 4°C
<b>Storage buffer</b>	Store at +4°C for short term (1-2 months). Aliquot and store at -20°C for long term. Avoid repeated freeze / thaw cycles
<b>Material safety datasheet</b>	<a href="#">Download MSDS</a>

# PROTOCOLS

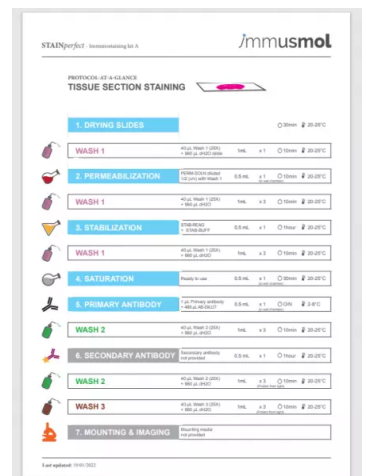
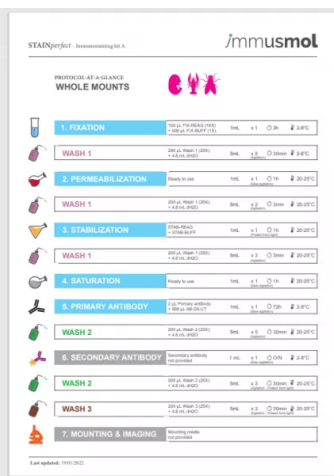
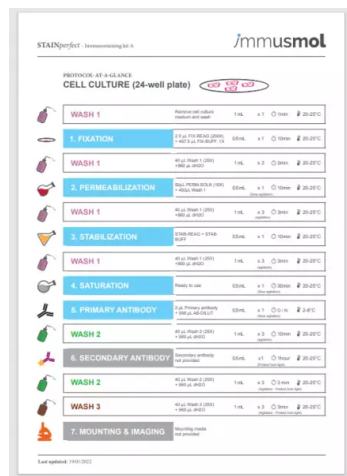
## Optimization of staining protocol ongoing

**Standard STAINperfect procedure** Dilute antibody with the antibody diluent provided in the [STAINperfect immunostaining kit A](#). Use at 1/250 -1/1000 dilution. Follow the STAINperfect protocol suited to your sample

**Comments** Optimal working dilutions must be determined by the end-user

**Restrictions** For research use only

**Full protocol** [Download STAINperfect protocol](#)



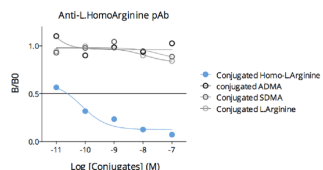
[Complete Instructions for Use](#)

[Protocol-at-a-glance for cell cultures](#)

[Protocol-at-a-glance for whole mounts](#)

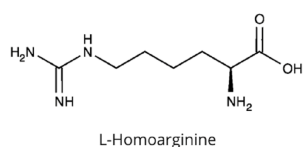
[Protocol-at-a-glance for tissue sections](#)

## Product pictures



### Affinity & specificity of anti-L-Homoarginine antibody

Competitive ELISA demonstrates that low amounts of L-Homoarginine conjugate are required to abolish antigen-antibody reaction (high affinity), while rising concentrations of Asymmetric Dimethyl Arginine (ADMA), Symmetric Dimethyl Arginine (SDMA) and L-Arginine (L-Homoarginine competitors) do not affect reaction (high specificity).



### L-Homoarginine

L-Homoarginine

## Contact information

Immusmol  
 229 Cours de l'Argonne  
 33 000 Bordeaux - France  
 Tel: +33 (0) 5 6431 1170  
 www.immusmol.com

**To order, review, ask for technical support, visit product page at:**

<https://www.immusmol.com/shop/l-homoarginine-pab/>