

L-Arginine Antibody – Rabbit Polyclonal

Ref: IS1055

Validated by direct and competitive ELISA, this rabbit polyclonal antibody recognizes L-Arginine at 1/10 000 working dilution, while displaying no significant cross-reactivity with competitors such as L-Ornithine, L-Glutamate and L-Homoarginine. Our team is currently working on the IF/ICC/IHC protocol for optimal staining in combination with the [STAINperfect immunostaining kit A](#).

Clonality	Polyclonal
Host	Rabbit
Reactivity	Reacts with all species
Validated by	ELISA
Staining procedure	STAINperfect immunostaining kit A
Format	50µL

INFORMATIONS

Product overview

Product name	L-Arginine – Rabbit pAb
Synonyms	Anti-L-alpha-amino-delta-guanidinovaleric acid antibody Anti-1-Amino-4-guanidovaleric acid antibody Anti-Levargin antibody
Immunogen	Conjugated L-Arginine
Specificity	When tested in competitive ELISA, the anti-conjugated L-Homoarginine antibody did not show any significant cross reactivity with L-Arginine competitors, L-Ornithine, L-Glutamate and L-Homoarginine

Storage

Form	Liquid
Purity	Purified antiserum
Storage	Store at +4°C for short term (1-2 months). Aliquot and store at -20°C for long term. Avoid repeated freeze / thaw cycles

Material safety datasheet [Download MSDS](#)

PROTOCOLS

Optimization of staining protocol ongoing

Standard STAINperfect procedure

Dilute antibody with the antibody diluent provided in the [STAINperfect immunostaining kit A](#). Use at 1/250 -1/1000 dilution. Follow the STAINperfect protocol suited to your sample

Comments

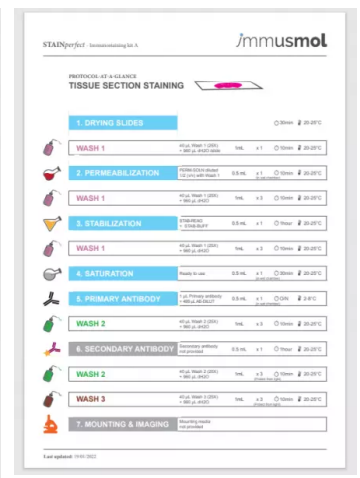
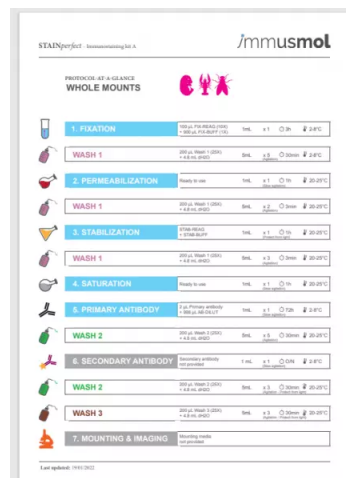
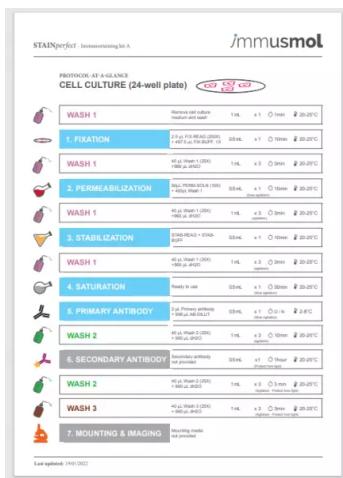
Optimal working dilutions must be determined by the end-user

Restrictions

For research use only

Full protocol

[Download STAINperfect protocol](#)



[Complete Instructions for Use](#)

[Protocol-at-a-glance for cell cultures](#)

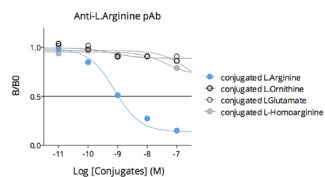
[Protocol-at-a-glance for whole mounts](#)

[Protocol-at-a-glance for tissue section staining](#)

REFERENCES

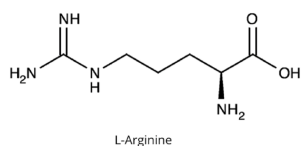
Antibody not yet cited.

Product pictures



Affinity & specificity of anti-Arginine antibody

Competitive ELISA demonstrates that low amounts of L-Arginine conjugate are required to abolish antigen-antibody reaction (high affinity), while rising concentrations of L-Ornithine, L-Glutamate and L-Homoarginine (L-Arginine competitors) do not affect reaction (high specificity).



L-Arginine

L-Arginine

Contact information

Immusmol
 229 Cours de l'Argonne
 33 000 Bordeaux - France
 Tel: +33 (0) 5 6431 1170
 www.immusmol.com

To order, review, ask for technical support, visit product page at:

<https://www.immusmol.com/shop/l-arginine-pab/>