

# L-Ornithine Polyclonal Antibody

Ref: IS1059

Validated by direct and competitive ELISA, this rabbit polyclonal antibody recognizes L-Ornithine at 1/10 000 working dilution, while displaying no significant cross-reactivity with competitors such as L-Glutamine, L-Glutamate and L-Arginine. In combination with optimal samples preparation using [STAINperfect immunostaining kit A](#), this antibody could allow direct L-Ornithine visualization in various type of samples (cell culture, tissue...).

<b>Clonality</b>	Polyclonal
<b>Host</b>	Rabbit
<b>Reactivity</b>	Reacts with all species
<b>Validated by</b>	ELISA
<b>Staining procedure</b>	<a href="#">STAINperfect immunostaining kit A</a>
<b>References</b>	Not yet cited to our knowledge. Submit content and <a href="#">get a 10% discount!</a>
<b>Format</b>	50µl

# INFORMATIONS

---

## Product overview

<b>Product name</b>	L-Ornithine – Rabbit pAb
<b>Synonyms</b>	Anti-L-Ornithine antibody Anti-(S)-2,5-Diaminopentanoic acid antibody Anti-(S)-Ornithine antibody Anti-(S)-2,5-diaminovaleric acid antibody
<b>Immunogen</b>	Conjugated L-Ornithine
<b>Specificity</b>	When tested in competitive ELISA, the anti-conjugated L-Ornithine antibody did not show any significant cross reactivity with L-Ornithine competitors: L-Glutamine, L-Glutamate and L-Arginine

## Storage

<b>Form</b>	Liquid
<b>Purity</b>	Purified anti-serum
<b>Storage</b>	Store at 4°C
<b>Storage buffer</b>	Store at +4°C for short term (1-2 months). Aliquot and store at -20°C for long term. Avoid repeated freeze / thaw cycles
<b>Material safety datasheet</b>	<a href="#">Download MSDS</a>

# PROTOCOLS

## IF - Cell cultures, Whole mounts, Tissue sections

Dilute antibody with the antibody diluent provided in the [STAINperfect immunostaining kit A](#). Use at 1/250 -1/1000 dilution. Follow the STAINperfect protocol suited to your sample

### Comments

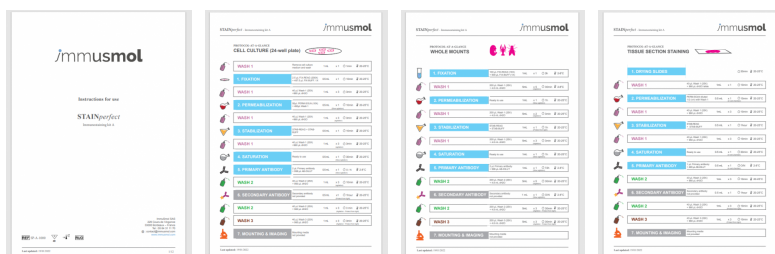
Optimal working dilutions must be determined by the end-user

### Restrictions

For research use only

### Full protocol

[Download STAINperfect protocol](#)



[Complete Instructions for Use](#)

[Protocol-at-a-glance for cell cultures](#)

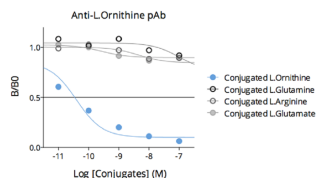
[Protocol-at-a-glance for whole mounts](#)

[Protocol-at-a-glance for tissue sections](#)

# REFERENCES

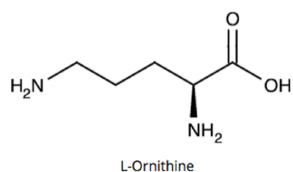
Antibody not yet cited. Submit an article and [get a 10% discount](#).

# Product pictures



### Affinity & specificity of anti- L-Ornithine antibody

Competitive ELISA demonstrates that low amounts of L-Ornithine conjugate are required to abolish antigen-antibody reaction (high affinity), while rising concentrations of L-Glutamine, L-Glutamate and L-Arginine (L-Ornithine competitors) do not affect reaction (high specificity).



L-Ornithine

L-Ornithine

## Contact information

Immusmol

229 Cours de l'Argonne

33 000 Bordeaux - France

Tel: +33 (0) 5 6431 1170

www.immusmol.com

**To order, review, ask for technical support, visit product page at:**

<https://www.immusmol.com/shop/l-ornithine-pab/>