

Arginine ELISA kit – High Sensitivity – Plasma, Serum, Supernatant

Ref: IS-I-0400R

Arginine (Arg) is a basic non-essential amino acid well known to participate in physiological functions such as i) vascular tone homeostasis as contributing to the production of nitric oxide (NO) and ii) immune response control, through NO synthase (NOS) and Arginase enzymes, respectively.

The Arginine (Arg) ELISA kit allows for the determination of Arg in **serum** and **plasma** samples working with a sample volume of 20µL. The kit is easy to implement and well suited for both preclinical and clinical studies.

Sample type Serum, Plasma, Cell culture

Capacity 96 tests

Sensitivity 2.1µM

Range 13 - 500µM

Assay time Sample preparation 3h, ELISA overnight

Reactivity Reacts with all species

References [Cited in 2 papers](#)

INFORMATIONS

Product overview

Product name	L-Arginine ELISA kit
Description	Competitive ELISA kit for the quantitative measurement of Arginine (L-Arg) in serum, plasma and cell culture samples. For research use only
Format	96-well plate
Samples	Serum, Plasma, Cell culture
Minimal sample volume	20µL
Reactivity	Reacts with all species
Standard range	5.12 – 200µM
Sensitivity	2.1µM
Specificity	No significant cross-reactivity was observed with HomoArginine, Agmatine, L-Citruline, L-Ornithine, ADMA and SDMA
Assay time	Sample preparation 3h and ELISA overnight
Storage	Store at 2-8°C for up to 6 months
Datasheets	Instructions for use , Material Safety Datasheet

PROTOCOLS

Sample collection & storage

Serum: Do not use lipemic, haemolytic samples, as well as samples containing precipitates or fibrin strands
Store samples at 2-8°C for up to 48h or -20°C for longer period (up to 6 months)

Sample preparation

Sample preparation (3 hours)

ELISA

L-Arginine antiserum overnight incubation, revelation and read steps (1h)

Detailed protocol

[Download instructions for use](#)

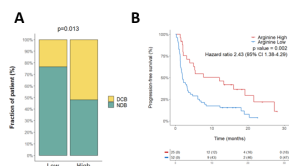
REFERENCES

Product citation

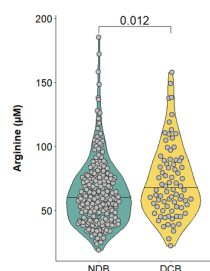
Product pictures



L-Arginine ELISA kit

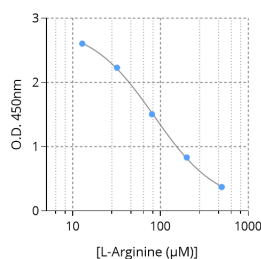


Arg metabolism is predictive of anti-PD(L)1 immunotherapy-treated patient outcome

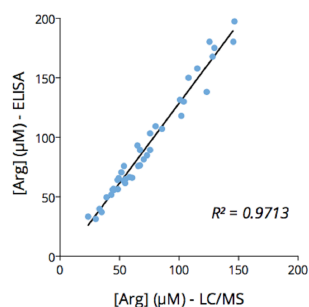


Arg metabolism is predictive of anti-PD(L)1 immunotherapy-treated patient outcome

Quantification of baseline plasmatic Arg in non-durable clinical benefit (NDB ; n= 214, green) and durable clinical benefit (DCB ; n= 80, yellow) patients. p value was calculated using Wilcoxon test.



Typical standard curve of Arginine ELISA



Cross-validation of Arginine ELISA and LC/MS data in human plasma samples

Arg was quantified in plasma samples from 40 human subjects either using IS-I-0400 ELISA kit or by liquid chromatography-mass spectrometry (LC/MS). Correlation coefficient of 0.9713 confirms the accuracy of the immunoassay.



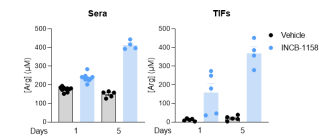
L-Arginine ELISA kit



L-Arginine ELISA kit



L-Arginine ELISA kit



Arginase inhibitor INCB-1158 restores Arg level in sera and TIFs in syngeneic MC38 mouse colorectal cancer model.

Contact information

Immusmol
229 Cours de l'Argonne
33 000 Bordeaux - France
Tel: +33 (0) 5 6431 1170
www.immusmol.com

To order, review, ask for technical support, visit product page at:

<https://www.immusmol.com/shop/arginine-elisa-kit/>