

# L-Serine ELISA kit – High Sensitivity – Plasma, Serum, Supernatant

Ref: IS-I-1200R

L-Serine (L-Ser) is a non-essential amino acid which becomes conditionally essential - in certain circumstances - particularly when it cannot be synthesized in a sufficient amount to meet the cellular demands. L-Ser is important for brain development and functions which are especially sustained by altered L-Ser levels in psychiatric disorders and occurrence of severe neurological abnormalities in patients with defects in L-Ser biosynthesis.

The L-Ser ELISA kit allows for the determination of Ser in cell culture supernatant, serum, and plasma samples working with a sample volume of 20µL. The kit is easy to implement and well-suited for both preclinical and clinical studies

<b>Sample type</b>	Plasma, Serum, Cell culture supernatant
--------------------	---

<b>Capacity</b>	96 tests
-----------------	----------

<b>Sensitivity</b>	2.4µM
--------------------	-------

<b>Range</b>	3.8 - 625µM
--------------	-------------

<b>Assay time</b>	Sample preparation 3h, ELISA overnight
-------------------	--

<b>Reactivity</b>	Reacts with all species
-------------------	-------------------------

<b>References</b>	<a href="#">Cited in 2 papers</a>
-------------------	-----------------------------------

# INFORMATIONS

## Product overview

<b>Product name</b>	L-Serine ELISA kit
<b>Description</b>	Competitive ELISA kit for the quantitative measurement of L-Serine (Ser) in plasma and serum samples. <b>For research use only</b>
<b>Format</b>	96-well plate
<b>Samples</b>	Plasma, Serum, Cell supernatant
<b>Minimal sample volume</b>	20µL
<b>Reactivity</b>	Reacts with all species
<b>Standard range</b>	3.8 – 625µM
<b>Sensitivity</b>	2.4µM
<b>Specificity</b>	No significant cross-reactivity was observed with Glycine, L-Threonine, L-Cysteine and D-Serine
<b>Assay time</b>	Sample preparation 3h and ELISA overnight
<b>Storage</b>	Store at 2-8°C for up to 6 months
<b>Datasheets</b>	<a href="#">Instructions for use</a> , <a href="#">Material Safety Datasheet</a>

For research use only – Do not use for diagnostic

## PROTOCOLS

<b>Sample collection &amp; storage</b>	EDTA Plasma Store samples at 2-8°C for up to 48h or -20°C for longer period (up to 6 months)
<b>Sample preparation</b>	Sample preparation (3 hours)
<b>ELISA</b>	L-Serine antiserum overnight incubation, revelation and read steps (1h)
<b>Detailed protocol</b>	<a href="#">Download instructions for use</a>

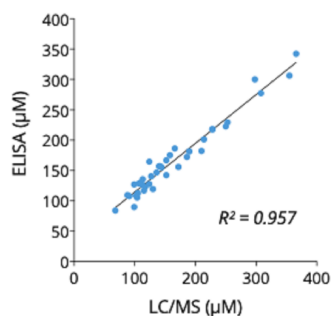
## REFERENCES

### Production citation

## Product pictures



**L-Serine ELISA kit**



### Cross-validation of L-Serine ELISA and LC/MS data in human plasma samples

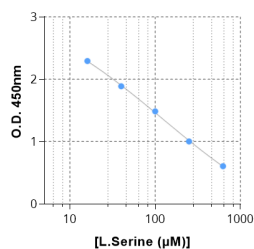
Ser was quantified in human plasma samples from 40 healthy subjects using IS-I-1200 ELISA kit or by LC/MS. Correlation study showed  $R^2=0.957$ , thereby confirming the accuracy of the immunoassay.



**L-Serine ELISA kit**



**L-Serine ELISA kit**



**Typical standard curve of Serine ELISA**

## Contact information

Immusmol  
229 Cours de l'Argonne  
33 000 Bordeaux - France  
Tel: +33 (0) 5 6431 1170  
[www.immusmol.com](http://www.immusmol.com)

**To order, review, ask for technical support, visit product page at:**

<https://www.immusmol.com/shop/l-serine-elisa-kit/>