

# STAINperfect™ – Trial pack

Ref: SP-T-0001

The trial pack STAINperfect™ allows testing the [STAINperfect™ immunostaining kit A](#) in combination with 2 primary antibodies to key neurotransmitters and small molecules. The kit is provided with all necessary reagents and protocols to test the STAINperfect™ procedure in cell cultures, whole mounts and brain tissue sections.

---

**Contents**

1x STAINperfect™ immunostaining kit A 2x 25µl antibody vials

---

**Number of stainings**

Cell cultures : 1x 96 well-plate Whole mounts : 20 samples  
Tissue sections: 40 slides

---

**References**

[Cited in 18 papers](#)

# INFORMATIONS

## Product overview

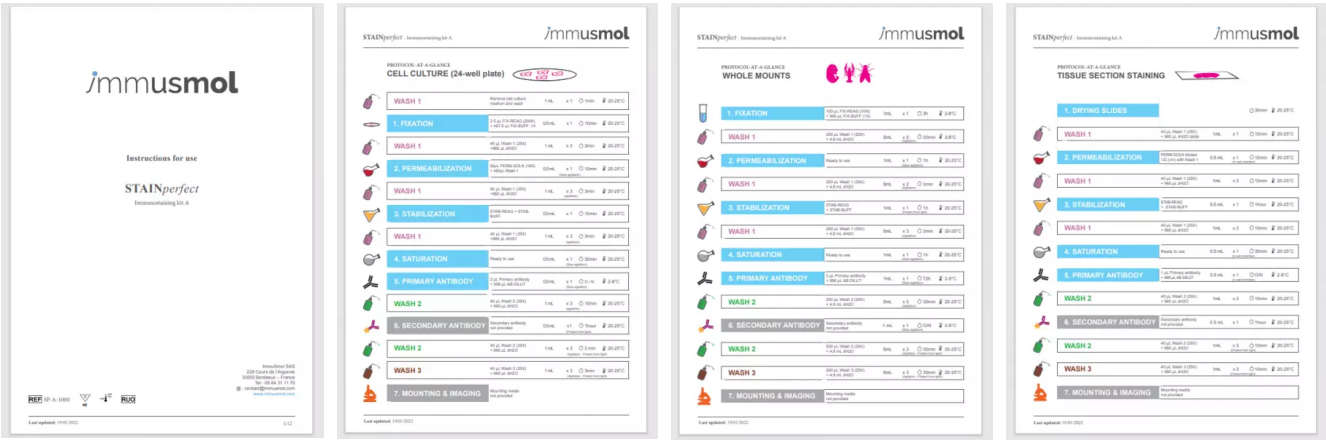
<b>Product name</b>	STAINperfect™ Neurotransmitters – Immunostaining Trial Pack
<b>Description</b>	Trial offer consisting of a STAINperfect™ immunostaining kit A and 2 primary antibodies in 25µl format.
<b>Eligible samples</b>	Cell cultures, whole mounts, tissue sections (any species)
<b>Number of stainings</b>	Cell cultures : 1x 96 well-plate Whole mounts : 20 samples Tissue sections: 40 slides
<b>Storage</b>	Store at 4C° until use
<b>Restriction</b>	For research use only

PROTOCOLS

**IF - Cell cultures, Whole mounts, Tissue sections** Dilute antibodies with the antibody diluent provided in the [STAINperfect™ immunostaining kit A](#). Use at 1/250 -1/1000 dilution. Follow the STAINperfect™ protocol suited to your sample.

**Comments** Optimal working dilutions must be determined by the end-user. Third-party anti-rabbit secondary antibody required.

Protocols



[Complete Instructions for Use](#)

[Protocol-at-a-glance for cell cultures](#)

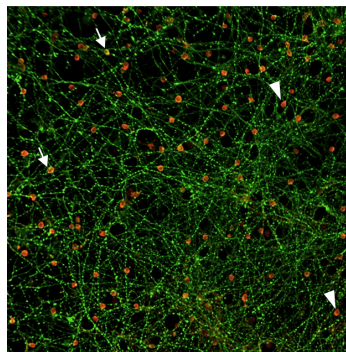
[Protocol-at-a-glance for whole mounts](#)

[Protocol-at-a-glance for tissue sections](#)

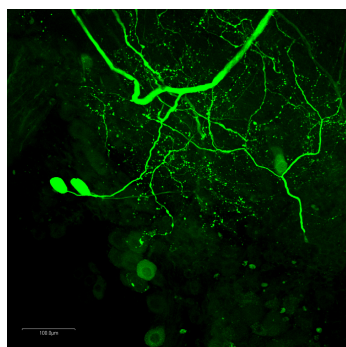
REFERENCES

Product citations

Product pictures

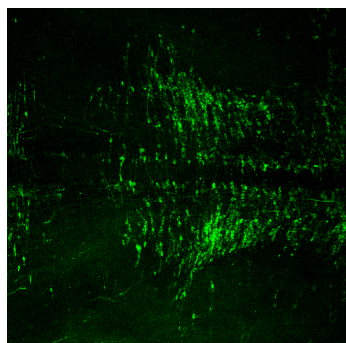


### **GABAergic network and glutamatergic cell populations**



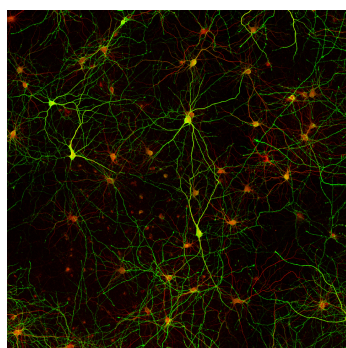
### **Dopamine immunostaining in crayfish nervous system**

STAINperfect immunostaining kit A in combination with our rabbit polyclonal anti Dopamine antibody provides high sensitive and specific visualization of Dopamine in crayfish nervous system.



### **Serotonin neurons labeled in the hindbrain of mouse embryo (E13.5)**

STAINperfect immunostaining kit A used in association with our optimized anti-Serotonin polyclonal antibody enables the detection of serotonergic soma and fibers in the medulla of mouse embryo.



### **GABA immunostaining in primary rat cortical neurons**

Our rabbit polyclonal antibody targeting GABA (gamma aminobutyric acid) used with the STAINperfect immunostaining kit A and optimized protocols highlights GABAergic soma and fibers in primary rat cortical neurons.



**STAINperfect**

---

## Contact information

Immusmol  
229 Cours de l'Argonne  
33 000 Bordeaux - France  
Tel: +33 (0) 5 6431 1170  
[www.immusmol.com](http://www.immusmol.com)

**To order, review, ask for technical support, visit product page at:**

<https://www.immusmol.com/shop/stainperfect-trial-pack/>