

# Serotonin Antibody – Rabbit

## Polyclonal

Ref: IS1086

This novel antibody raised against Serotonin (5-hydroxytryptamine, 5-HT) ([#IS1086](#), polyclonal) is compatible with formalin-fixed biological materials. While allowing for the specific immunodetection of the serotonergic systems, our antibody has been validated for its use through immunohistochemistry and immunofluorescence applications on formalin-fixed paraffin-embedded (FFPE) samples originating from different species.

<b>Clonality</b>	Polyclonal antibody
<b>Host</b>	Rabbit
<b>Reactivity</b>	Reacts with all species
<b>Validated applications</b>	IF/IHC-P, IF/IHC-F (manual and automated staining)
<b>Format</b>	50µL

# INFORMATIONS

## Product overview

<b>Product name</b>	Serotonin antibody (5-HT rabbit polyclonal Ab)
<b>Synonyms</b>	Anti-5-HT antibody Anti-5-hydroxytryptamine antibody
<b>Immunogen</b>	Conjugated 5-HT
<b>Specificity</b>	When tested in competitive ELISA, the anti-conjugated serotonin antibody did not cross-react with 5-hydroxytryptamine analogs, including tryptamine and 5-hydroxytryptophan
<b>Volume</b>	50µL

## Storage

<b>Form</b>	Liquid
<b>Purity</b>	Purified anti-serum
<b>Storage buffer</b>	Store at +4°C for short term (1-2 months). Aliquot and store at -20°C for long term. Avoid repeated freeze / thaw cycles
<b>Material safety datasheet</b>	<a href="#">Download MSDS</a>

## PROTOCOLS

---

**IF - Cell cultures, Whole mounts, Tissue sections** Dilute at 1/250 -1/1000

---

<b>Comments</b>	Optimal working dilutions must be determined by the end-user
-----------------	--

---

<b>Restrictions</b>	For research use only
---------------------	-----------------------

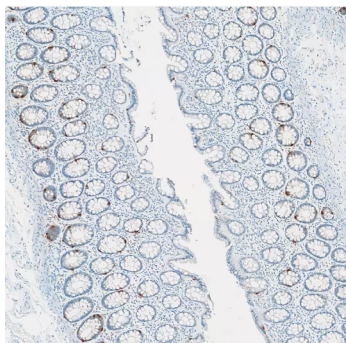
## REFERENCES

---

Antibody not yet cited. Submit an article and [get a 10% discount](#).

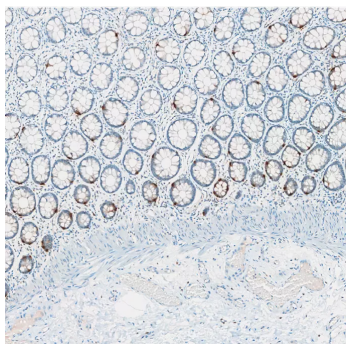
## Product pictures

---



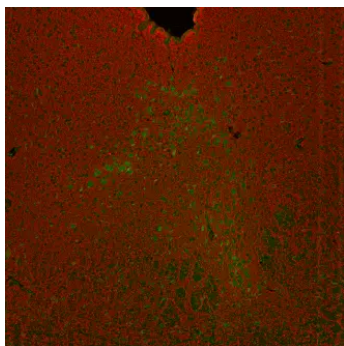
### **Immunohistochemistry against serotonin (5HT) on a FFPE human colon coronal section**

5HT immunoreactivity, revealed using anti-serotonin (5HT, rabbit polyclonal antibody #IS1086), is highlighted in enterochromaffin cells of the intestinal mucosa.



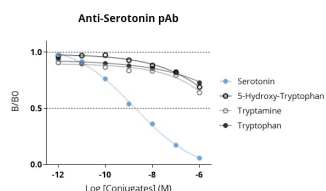
### **Immunohistochemistry against serotonin (5HT) on a FFPE human colon coronal section.**

5HT immunoreactivity, revealed using anti-serotonin (5HT, rabbit polyclonal antibody #IS1086), is highlighted in enterochromaffin cells of the intestinal mucosa.



### Serotonergic neurons of the Raphe nucleus through a FFPE mouse brainstem coronal section

revealed by anti-serotonin (5HT, rabbit polyclonal antibody #IS1086) and Microtubule-Associated Protein-2 (MAP2) immunohistofluorescence. 5HT immunoreactivity highlights well the 5HT-containing neurons of the dorsal (DRN).



### Affinity & specificity of anti-Serotonin rabbit polyclonal antibody

Competitive ELISA highlights that low amounts of conjugated Serotonin are required to abolish antigen-antibody reaction (high affinity), while rising concentrations of analog conjugates (5-Hydroxy-Tryptophan, Tryptamine or Tryptophan) affect only to a lesser extent the reaction (high specificity).

## Contact information

Immusmol  
229 Cours de l'Argonne  
33 000 Bordeaux - France  
Tel: +33 (0) 5 6431 1170  
[www.immusmol.com](http://www.immusmol.com)

**To order, review, ask for technical support, visit product page at:**

<https://www.immusmol.com/shop/serotonin-polyclonal-antibody-is1086/>